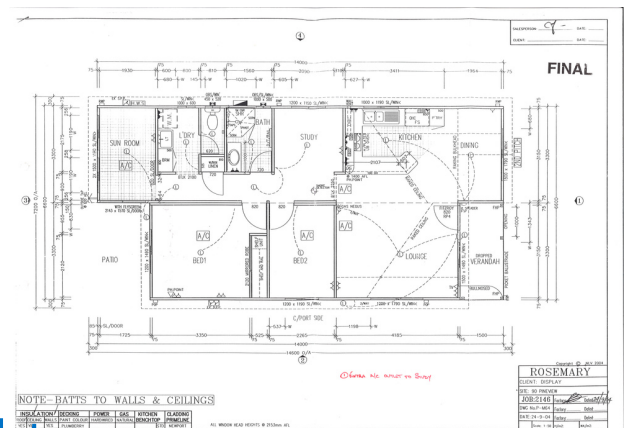


# Rosemary

# \$250,000

Established Home For Sale

as displayed  
PVT090



## What a bargain! Downsizers delight

With a north facing back yard, cafe blinds enclose this lovely, private alfresco area. 2 beds plus study, PLUS sunroom to the rear of the home, raked ceilings to the living, spacious kitchen and master suite, air conditioning, solar panels, what else do you need... at this price, you'd better be quick!

Clinton McKenna | **0459 867 410** | [clintonmc@nlv.com.au](mailto:clintonmc@nlv.com.au)

<https://www.nlv.com.au/villages/pineview/>

48 Ashley Rd, Tapping WA 6065

