



## WHISTLER

# \$419,000

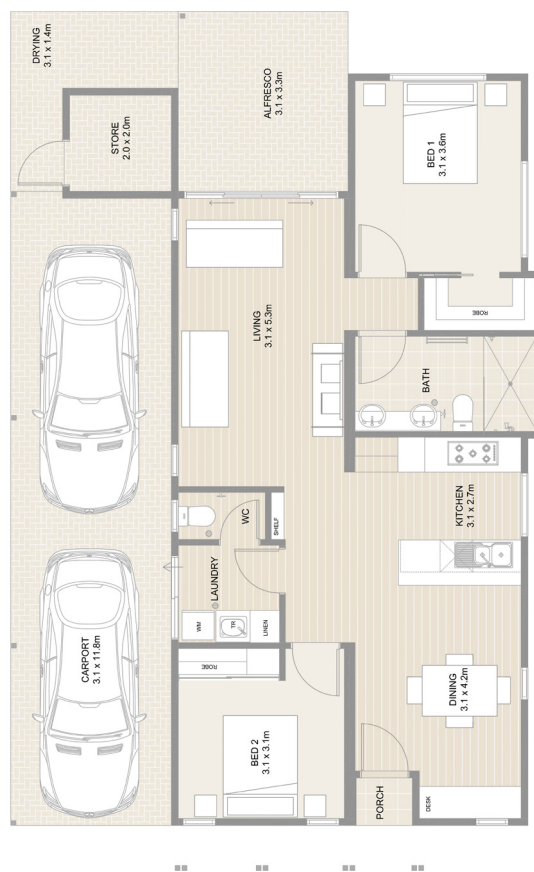


### Entertainer's Delight

This lovely two bedroom home stands out with its skillion roof. From the entry porch you step into a generous open plan kitchen and dining area. A separate lounge opens onto the alfresco area. The main bedroom is located at the rear of the home and can be closed off from the living area. The second bedroom is located at the front of the house offering privacy for your guests when they come to stay.

- No stamp duty
- No council rates
- No strata fees
- 6 star energy efficiency rating

Make your move to Vibe Baldvis Lifestyle Village for over 50s and be spoilt for choice on how to fill your days with all the social events, resort style facilities and so much more.



Disclaimer: The information contained in this brochure was correct and up to date at the time of printing, and may be subject to change at any time. Landscaping may vary depending on the site. These images are indication only. There is no expressed or implied representation, warranty or guarantee that it is complete, accurate or reliable. We may vary or modify the information, pricing or the images at any time without prior or subsequent notice.

Sales office open Monday to Friday 8:30am-4pm  
**08 9524 4403 | vibebaldvis@nlv.com.au**  
**nlv.com.au**

